

Locomotion Scoring of Dairy Cattle*



PERFORMANCE MINERALS®

www.zinpro.com

Available from:

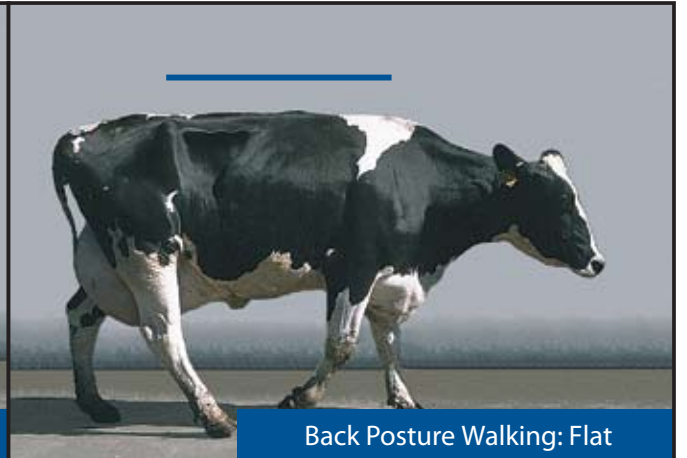
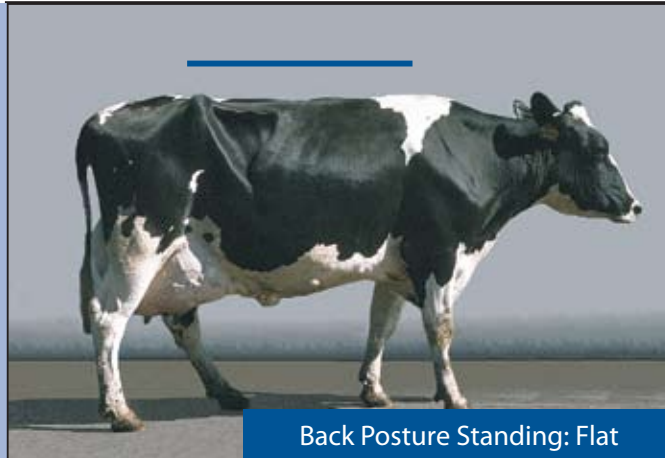
LOCOMOTION SCORE

1

Clinical Description:

NORMAL

Description: Stands and walks normally with a level back. Makes long confident strides.



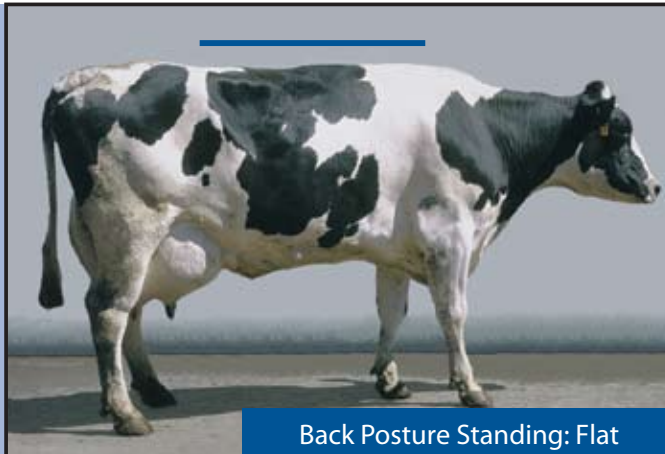
LOCOMOTION SCORE

2

Clinical Description:

MILDLY LAME

Description: Stands with flat back, but arches when walks. Gait is slightly abnormal.



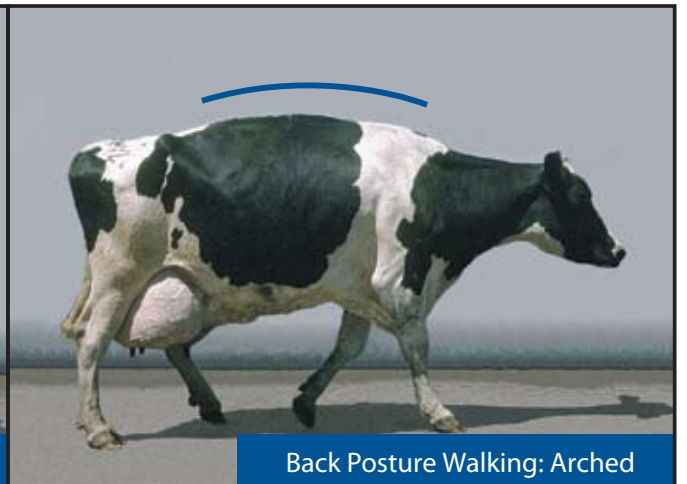
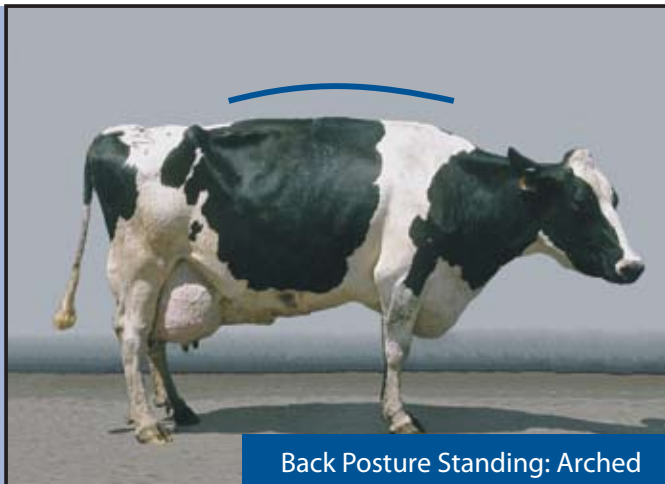
LOCOMOTION SCORE

3

Clinical Description:

MODERATELY LAME

Description: Stands and walks with an arched back and short strides with one or more legs. Slight sinking of dew-claws in limb opposite to the affected limb may be evident.



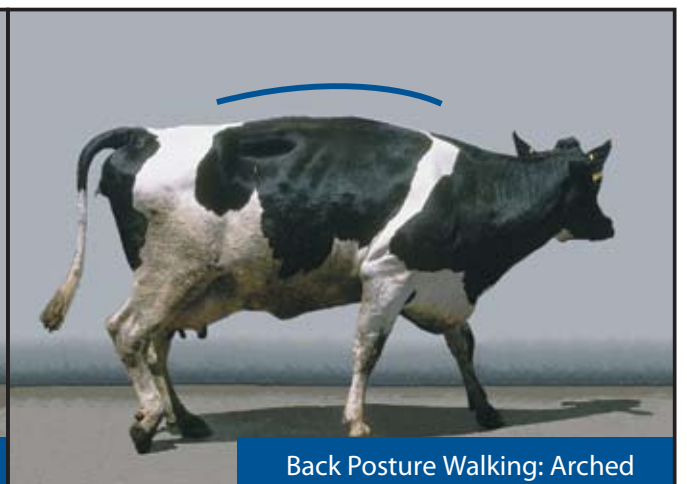
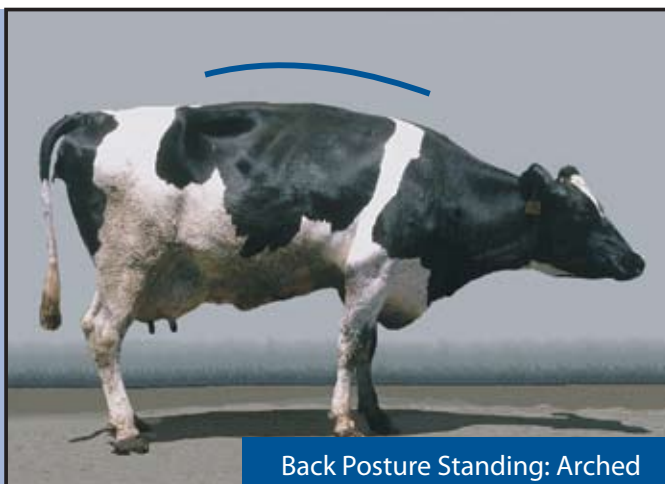
LOCOMOTION SCORE

4

Clinical Description:

LAME

Description: Arched back standing and walking. Favouring one or more limbs but can still bear some weight on them. Sinking of the dew-claws is evident in the limb opposite to the affected limb.



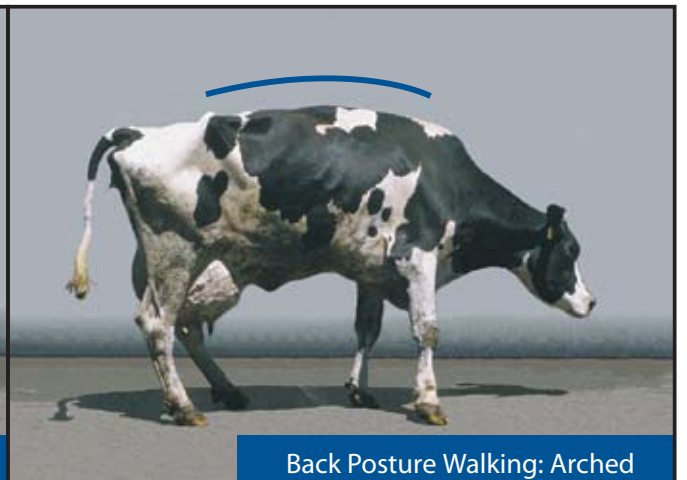
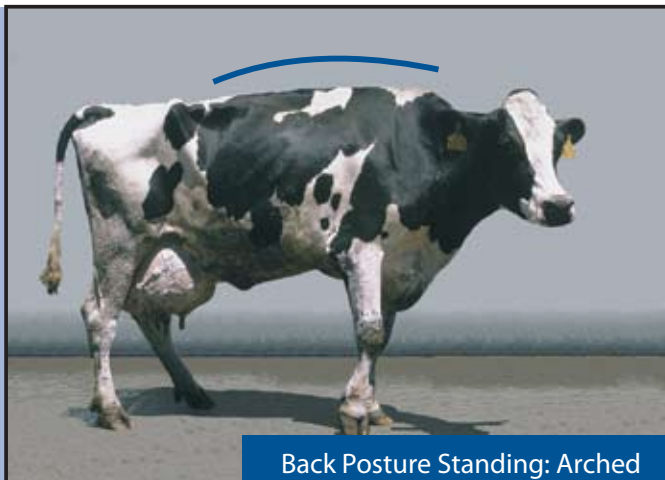
LOCOMOTION SCORE

5

Clinical Description:

SEVERELY LAME

Description: Pronounced arching of back. Reluctant to move, with almost complete weight transfer off the affected limb.



* Adapted from Sprecher, D.J.; Hostetler, D.E.; Kaneene, J.B. 1997. Theriogenology 47:1178-1187 and contribution from Cook, N.B, University of Wisconsin.